

NORO WA HINA

KRUGER LODGE

your place, our dream!

LODGE

EXPERIENCE

NATURE

SMILE

NORO WA HINA KRUGER LODGE

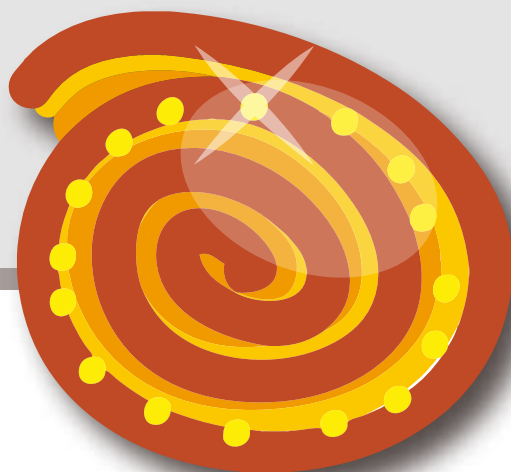
Despite being the most modern African country, South Africa still offers many of the attractions that draw people to Africa.

It is infused with vibrant culture and the wild African bush at its back door. This is important to understand why South Africa is such a special place. It has a rare mix of modern development, African culture, outdoor attractions and untamed wildlife that you will find nowhere else in the world!

You won't be disappointed in your choice to visit this exciting country!

Get away from your hectic life, rejuvenate your senses and become one with nature at our lodge Noro Wa Hina in the middle of the African bush in combination with modern comforts. The place where you can experience this and so much more.....live YOUR DREAM!!

Hillary Zwagopol *Juan Nuñez*



- 1.- SouthAfrica
- 2.- Our Region
- 3.- The Lodge
- 4.- Area Facilities
- 5.- Kruger National Park
- 6.- Marloth Park

NORO WA HINA
your place, our dream!

A lioness is walking towards the camera in a savanna setting. The lioness has a light brown coat and is looking directly at the viewer. The background is a blurred landscape with green bushes and trees under a bright sky. The text "AFRICA + YOU" is overlaid in large white letters.

AFRICA + YOU



Without doubt, South Africa completely embodies the term 'Rainbow Nation' and if you're into sun-drenched vineyards, far-reaching coastlines, abundant wildlife and absolutely no jet-lag then, welcome to paradise.



You'll discover a vast range of activities and things to do and, seeing as you'll only be 2 hours in front of GMT,

If you're up for a slightly wilder experience then you won't find many better locations than Kruger National Park which boasts an unrivalled array of animals as authentic safari camps.

With road trips to the vineyards of Stellenbosch and Franschhoek competing with the fabulous Garden Route to Port Elizabeth, South Africa is truly as diverse as her rainbow name suggests. From whale watching and sleepy seaside towns to living the high life in the trendy clubs and bars of Johannesburg, this is your chance to experience all that this great country stands for and make the folks back home green with envy.



Mpumalanga

Mpumalanga, is a province of South Africa. The name means east or literally "the place where the sun rises" in Swazi, Xhosa, Ndebele and Zulu.

The capital is Nelspruit. Before 1994, Mpumalanga was part of Transvaal Province.

'THE PLACE WHERE THE SUN RISES'
Formally known as Eastern Transvaal, Mpumalanga is considered to be one of the most geographically diverse and unbelievably beautiful places in South Africa.



Mpumalanga lies in the east of South Africa, north of KwaZulu-Natal and bordering Swaziland and Mozambique. In the northeast, the land rises towards mountain peaks and then terminates in an immense escarpment.

In some places, this escarpment plunges hundreds of metres down to the low-lying area known as the Lowveld.

The entire Mpumalanga area offers exceptional opportunities for bird-watching, hiking, horse-riding and fishing. Streams once panned for gold have become the haunts of eager anglers and lazy trout. Steeped in the history of pioneers and fortune seekers, fascinating gold rush towns abound. Mpumalanga offers something for everyone.



Your place, our dream!
 “Noro Wa Hina”.
 Relaxation, adventure -
 the finest safari
 experience in
 South Africa.



Noro Wa Hina welcomes you to enjoy
 our Private Lodge, totally new, beautiful
 views and intimate atmosphere.

Experience in a civilised way, one of the
 wildest places on earth luxury in the
 heart of the African bush.

Nature is round the corner.



The Lodge

Entrance to the lodge is through the kitchen, which is fully equipped with a gas stove, electric oven, fridge, freezer and other modern appliances.

There is a pantry for groceries and any other storage opposite the kitchen. Also you find a reading corner, in which you will find a great selection of wildlife, birds and other african related books.

From the kitchen you enter the living area, from where you have a fantastic view of the bush through the large glass stack doors.

Open the stack doors and stepping outside you find yourself on the veranda, a great place to chill out or enjoy a meal.

But it is much more fun to sit in the boma (african braai/ barbecue area) and have a dining experience around an open fire under a starlit sky!



A refreshing relief from the summer heat you will find in the beautiful swimming pool with his outside shower.

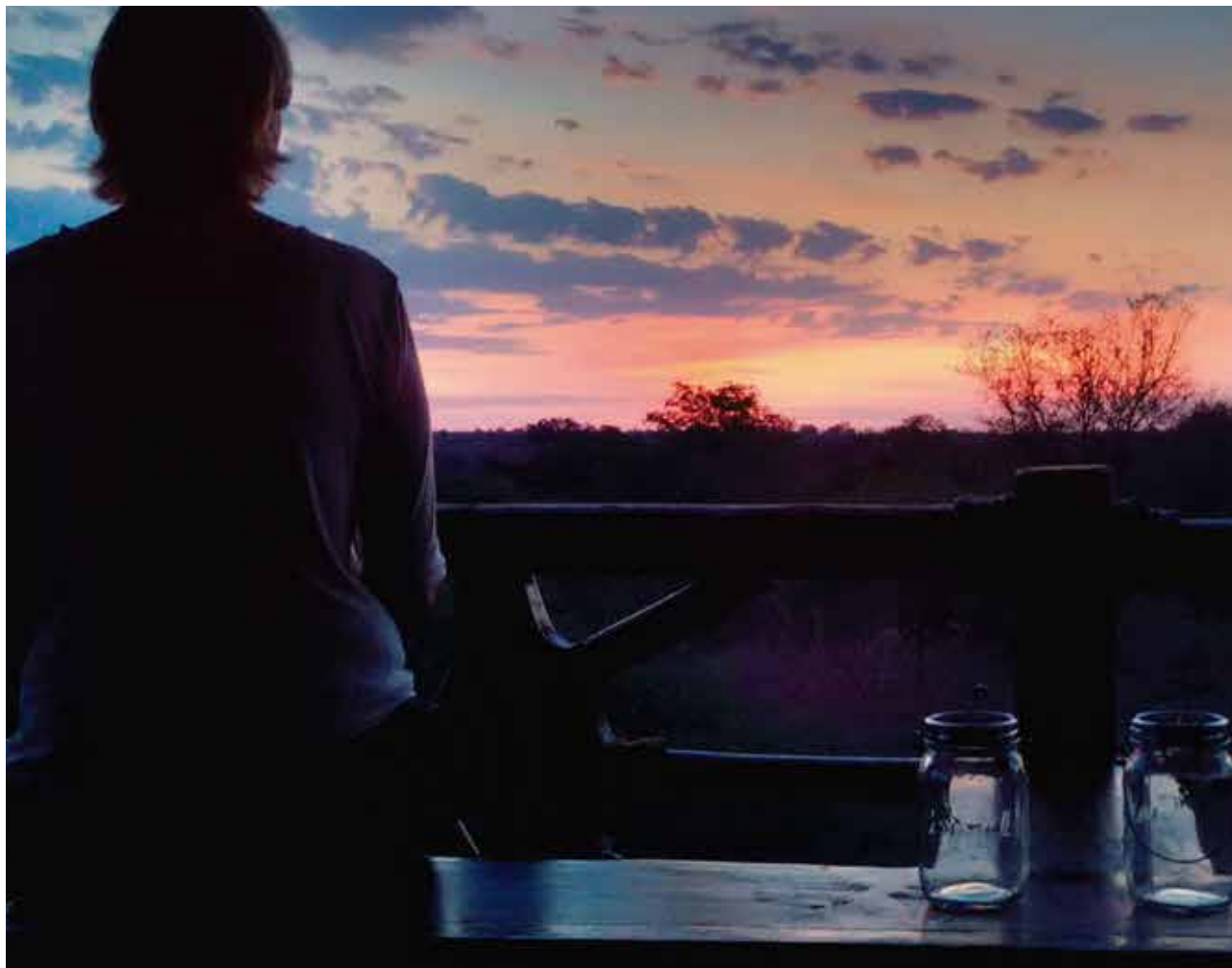
The indigenous trees and flowers attract an abundance of bird species and animal gathering at the waterhole.

Our upstairs deck offers a fantastic view over the bush and into the Kruger National Park.

It is a wonderful place to be to enjoy a drink or even a meal on the table set.

Don't miss out the sunsets from the deck, they are breathtaking! Regularly you can hear the lions roaring at evenings/nights.

It's just perfect!!



NORO WA HINA

NORO WA HINA (our dream in Tsonga, one of the 11 official languages in South Africa) is situated in Marloth Park , a private residential game reserve where all African wildlife roams free.

A safari just in front of the lodge!! For bigger game like elephants, rhinos, lions etc. we recommend to visit Kruger National Park (approx. a 20 min. drive from the lodge). Marloth Park borders the Kruger National Park south of the Crocodile river, in the Mpumalanga province and is neighboured by Mozambique and Swaziland.

The Crocodile river is about 500 meter from the lodge, where you could spot the big five, crocodiles, hippos and many other game species.

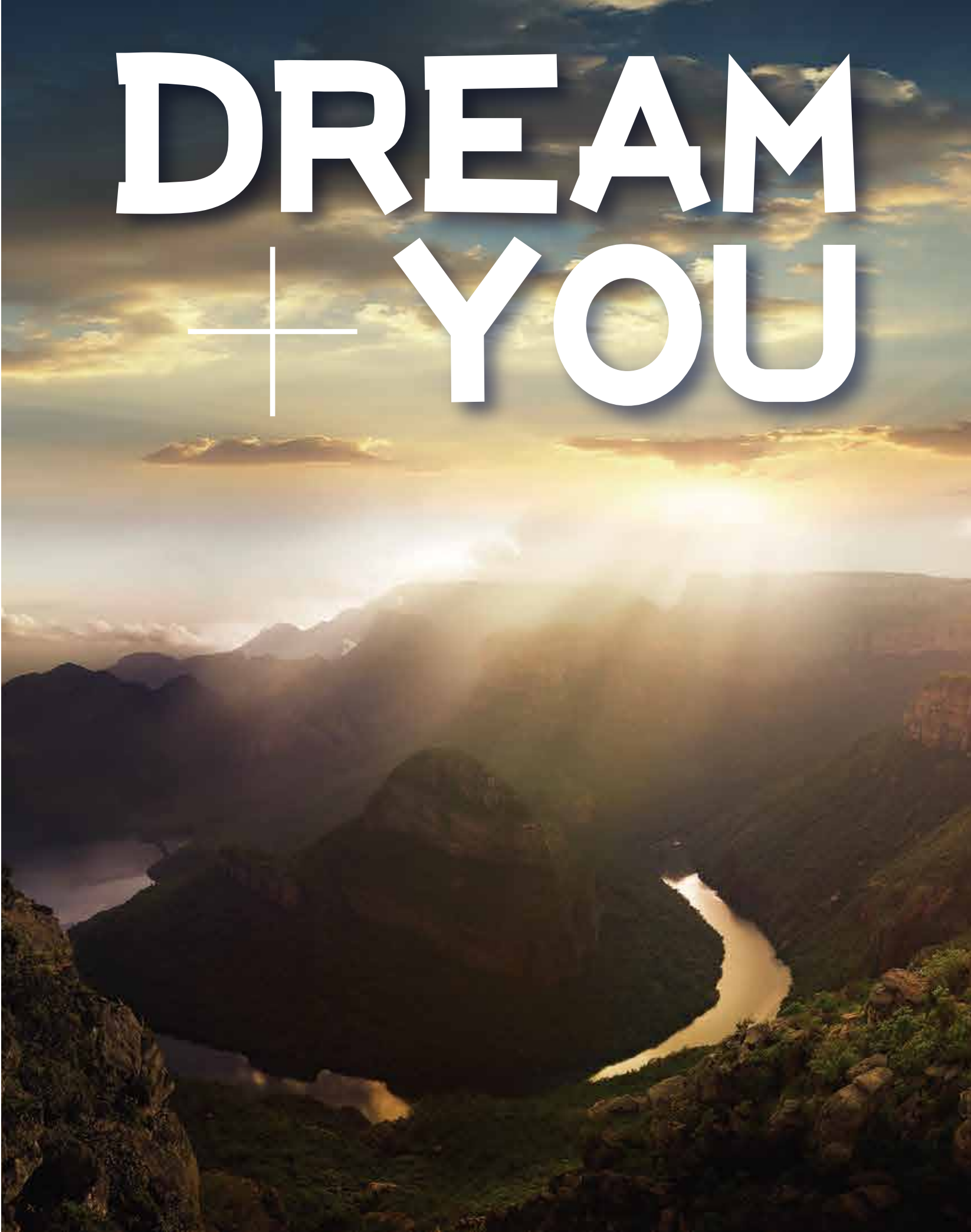


Sit down and relax at one of the look out points at the river with your binoculars and see what strolls by or enjoy all the bush-sounds from the veranda of the lodge, what a great experience!!

NORO WA HINA offers accommodation for 6 guests, 3 bedrooms with ensuite bathrooms, an open plan kitchen and lounge, a barbecue area, a wonderful pool and a huge viewing deck.

Enthusiastic to have this experience? Visit NORO WA HINA! You are more than welcome and we will see to it that you have all the luxury, enjoyment and excitement for a lovely stay!!

DREAM + YOU





Kruger National Park

Kruger Park is South Africa's most exciting African safari destination. Steeped in legend and history, the iconic Kruger National Park in South Africa is waiting for you to explore its vast landscapes and spectacular African wildlife.

Plan your Kruger Park safari trip from our recommended safari tour options, which range from exclusive private safaris to affordable group safaris.

Kruger National Park is the largest game reserves in Africa. It covers an area of 19,485 square kilometres (7,523 sq mi) in the provinces of Limpopo and Mpumalanga in northeastern South Africa, and extends 360 kilometres (220 mi) from north to south and 65 kilometres (40 mi) from east to west.

The administrative headquarters are in Skukuza. Areas of the park were first protected by the government of the South African Republic in 1898, and it became South Africa's first national park in 1926.



To the west and south of the Kruger National Park are the two South African provinces of Limpopo and Mpumalanga. In the north is Zimbabwe, and to the east is Mozambique.

It is now part of the Great Limpopo Transfrontier Park, a peace park that links Kruger National Park with the Gonarezhou National Park in Zimbabwe, and with the Limpopo National Park in Mozambique.

The park is part of the Kruger to Canyons Biosphere an area designated by the United Nations Educational, Scientific and Cultural Organization (UNESCO) as an International Man and Biosphere Reserve (the "Biosphere").

The park has nine main gates allowing entrance to the different camps.



Marloth Park

A true bush veldt experience, and so very close to nature. Something for every nature lover. From the animals visiting you whilst having your braai, or morning coffee, the song and view of spectacular birdlife spoiling you under the African skies to the beautiful stars in unspoilt nature at night.

Drive, or walk to the river to view the big 5, or simply have a sun downer next to the crocodile river drinking in the peaceful setting only to be found at Marloth Conservatory, an unique experience not to be missed.

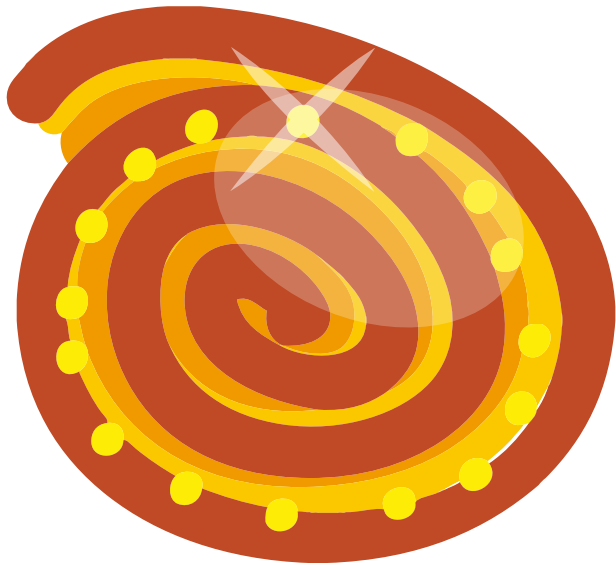
Close by is a real bush feeling shopping centre for those needed items that have been forgotten, a garage, restaurant, deli, bottle store, laundry, hardware and bakery.



For the special occasion, a breakfast, lunch or dinner can be enjoyed at one of the lodges in Marloth Park. Komatipoort is only 25 km away for those that want to just see a bit of civilisation and the Crocodile gate to the Kruger Park is a mere 30 kilometres from Marloth park.

If you still need more adventure, wildlife safaris are available by 4x4 guided tours, Swaziland nearby and the Maputo border post just 30 km from Marloth Park.

There sure is enough for every one and anyone to suit every taste and adventure.



NORO WA HINA
your place, our dream!